



**MARTINEZ**



**PRODUCE & SEAFOOD**

# *Seafood*

• **CATALOG** •

340 N. SACRAMENTO BLVD.  
CHICAGO, IL 60612

**773-826-2840**

FAX: 773-826-2839

• • • •

**BOSTON FISH PIER, BAY 25-27**

212 NORTHERN AVE.  
BOSTON, MA 02210

**857-350-3483**

FAX: 857-233-4753





# TABLE OF CONTENTS

ABOUT US	01
TUNA	03
SALMON	04
SASHIMI FRESH FISH	05
FIN FISH	06
TOYOSU FISH MARKET	07
SASHIMI/NIGIRI	08
SUSHI BAR ESSENTIALS	10
IDEAL APPETIZERS	15
SHELLFISH/OYSTERS/CLAMS	17
JAPANESE CUISINE VEGETABLES	18
PRODUCE	19
CONTAINERS	20



## ABOUT US

"We bargain hard to get the best price and we pass the savings on to you."

The Martinez brothers established Martinez Produce & Seafood in 2005. With the help of one brother with years of expertise in the fish industry and another with years of experience in the produce industry, MPS was able to expand operations swiftly from a few square feet of cooler space to two distribution warehouses in Chicago and Boston. The brothers' love for the seafood and produce industries propelled them to one of the leading seafood and produce purveyors in the country today.

We currently service customers across the Midwest and Northeast from our west loop Chicago warehouse and from our shop on the Boston Fish Pier, and we are proud to play a significant role in your business.







# WHY CHOOSE MARTINEZ PRODUCE & SEAFOOD?

## PRIME SELECTION OF PRODUCTS

We offer a full line of fresh, frozen, and live seafood sourced responsibly from local and international markets. MPS offers Asian food essential from rice and nori to sushi trays. To supplement, we carry all sorts of fresh produce and fruits extending from avocados to all sorts of berries.

## CUSTOM HAND CUT PROCESSING

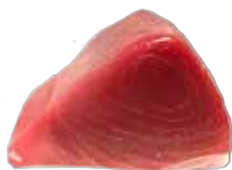
To meet the needs of our customers, our professional cutters hand-cut tuna, salmon, halibut, and many more fisheries. Since these fishes are so delicate, our employees must be careful when handling, frosting, and packaging them. Rest assured that your seafood will be delivered in the freshest condition possible, ready for preparation and serving, thanks to our strict protocols and expertise.

## FRESH FISH FROM JAPAN

As a result of client demand and our expertise, we are now able to buy a quality selection of Japanese exotic fish directly from two of Japan's biggest fish markets. Our daily presence on-site allows our experts to choose the freshest catch possible, pack the fish to preserve freshness, and send the fish directly to us all in a matter of hours.

## PROFESSIONAL SERVICE

As any other successful business, growth is due to great customer service. We proudly serve wholesalers, restaurants, retail stores, supermarkets, hotels, and food preppers across the Midwest and northeast United States.



## FRESH YELLOWFIN TUNA LOIN

### ORIGIN

Wild Caught



## FRESH BIGEYE TUNA LOIN

### ORIGIN

Wild Caught



## FRESH BLUEFIN TUNA

### ORIGIN

Spain

Mexico

Japan



## FROZEN TUNA YELLOWFIN SAKU

### ORIGIN

Vietnam

### BRAND

MTZ



## FROZEN GROUND TUNA

### ORIGIN

Vietnam

### BRAND

MTZ



## FROZEN YELLOWFIN TUNA LOIN

### ORIGIN

Vietnam

### BRAND

MTZ



## FROZEN TUNA STEAK

### ORIGIN

Vietnam

### BRAND

MTZ



## FROZEN TUNA POKE/CUBE

### ORIGIN

Vietnam

### BRAND

MTZ



## FROZEN TUNA STRIP

### ORIGIN

Vietnam

### BRAND

MTZ



## FROZEN ALBACORE TUNA

### ORIGIN



## FROZEN TUNA BLUEFIN LOIN

### ORIGIN



## FROZEN TUNA BLUEFIN SAKU

### ORIGIN



## SMOKED SALMON

ITEM #	SPECS
77002	Mcknight Trimmed Side 2-4
77006	Mcknight "Glen Dawn"



## FROZEN SALMON FILLET

ITEM #	SPECS
SAL-FRZ	(S-Off)
SAL-F-B	(B Grade)



## FROZEN FAROE SALMON FILLET

ITEM #	ORIGIN	SPECS
	Faroe	E Trim



## NORWEGIAN SALMON

ITEM #	ORIGIN	SPECS
SAL-N	Norway	6/7 , 7/8 , 8/9 , 9+

## FAROE SALMON



ITEM #	ORIGIN	SPECS
SAL-F	Faroe	6/7 , 7/8 , 8/9 , 9+

## CANADIAN SALMON



ITEM #	ORIGIN	SPECS
SAL-C	Canada	6/7 , 7/8 , 8/9 , 9+

## SCOTTISH SALMON



ITEM #	ORIGIN	SPECS
SAL-S	Scotland	6/7 , 7/8 , 8/9 , 9+

## ICELAND SALMON



ITEM #	ORIGIN	SPECS
SAL-I	Iceland	6/7 , 7/8 , 8/9 , 9+

## KING SALMON



ITEM #	ORIGIN
SAL-NZ	New Zealand



## AJI

ITEM #  
JF-AJI

ORIGIN  
Japan



## KANPACHI WHOLE

ORIGIN  
Japan  
Hawaii  
Mexico



## GEODUCK (MIRUGAI)

ITEM #  
GEODUCK

ORIGIN



## MADAI

ITEM #  
JF-TAI-S

ORIGIN  
Japan



## HAMACHI DRESS

ITEM #  
JF-HAMA-HG

ORIGIN  
Japan



## SHIMA AJI

ITEM #  
JF-SHIMA

ORIGIN  
Japan



## FRESH HAMACHI FILLET

ITEM #  
JF-HFILLET-C

ORIGIN  
Japan



## STRIPED BASS (SUZUKI)

ITEM #  
SBASS-01

ORIGIN  
USA



## HIRAME

ORIGIN  
Korea  
Japan



## UNI

ORIGIN  
Japan/Mexico  
California/East Coast



## FRESH KANPACHI FILLET

ITEM #  
JF-KANP-F

ORIGIN  
Japan



*We carry the following  
Fin Fish products:*



**MAHI MAHI**

**CHILEAN SEABASS**

**BRANZINI**

**BARAMUNDI FILLET**

**SWORDFISH**

**FLOUNDER**

**SWORD STEAK**

**COD FISH**

**GROUPER**





## *We bring Toyosu to you...*

Toyosu, formally Tsukiji Market, is considered the largest seafood marketplace in the world. The market supplies hundreds of vigorous fishmongers, Michelin star restaurants, and celebrity chefs who are all there for the same reason, the freshest catch possible. Access to their premium catches is nearly impossible without the proper reputation and trust within the market. MPS' on-site experts have premium access which allows them to select the freshest catch possible.

Our experts are stationed daily before sunrise to inspect every single fish to make sure it's of elite quality. Once assured that the fish is premium quality, we carefully pack and ice each box to ensure that the fish will be cooled for as long as possible.

Afterwards, we rush all orders to Tokyo's International Airport where they are shipped on expedited terms in order for us to receive them the following morning. Upon arrival, the fish is examined by the FDA and once cleared, our staff reinspects the quality of the fish.

Before you know it, your order is arriving through the door ready to be prepared and served to your customers who are seeking the authentic taste of Japanese fish. This is what is meant when we say we bring Toyosu to you. Contact your sales associate or our office for further information on how we can bring Toyosu to you.

- **ALFONSINO** *JI-KINMEDAI*
- **BABY SMELT** *CHIAYU*
- **BARRACUDA** *KAMASU*
- **BLEUFISH** *KUROMUTSU*
- **BLUE FUSILIER** *AODAI*
- **BLUE NOSE** *MEDAI*
- **BLUEFIN TUNA** *HON MAGURO*
- **BOILED SQUID** *HOTARUIKA*
- **BONITO** *KATSUO*
- **BUTTER FISH** *EBODAI*
- **CHAR** *IWANA*
- **COCKLE** *TORIGAI*
- **COD** *TARA*
- **COD MILT** *SHIRAKO*
- **CONGER EEL** *ANAGO*
- **CONGER EEL** *NORESORE*
- **CORNET FISH** *AKAYAGARA*
- **CUTTLEFISH** *SUMI-IKA*
- **EEL** *IKEJIME UNAGI*
- **FILE FISH** *UMAZURAHAGI*
- **FLAT HEAD** *MAGOCHI*
- **FLOUNDER** *MAKOGAREI*
- **FLOUNDER** *MATSUKAWA*
- **FLUKE** *HIRAME*
- **FLYING FISH** *TOBIUO*
- **FROZEN SARDINE** *SHIRASU*
- **GREEN EYES** *MEHIKARI*
- **GREENLING** *AINAME*
- **GROUPER** *KIHATA*
- **GROUPER** *AZUKIHATA*
- **GROUPER** *KIJIHATA*
- **HALF BEAK** *SAYORI*
- **HANASAKI CRAB** *HANASAKIGANI*
- **HERRING** *NISHIN*
- **HOBO** *BLUEFIN SEAROBIN*
- **ICEFISH** *SHIRAUO*
- **JACK MACKEREL** *TSURI AJI*
- **JAPANESE WHITING** *KISU*
- **KEGANI CRAB**
- **KING CRAB** *TARABAGANI*
- **KINKI** *THORNYHEAD*
- **KNIFEJAW** *ISHIDAI*
- **MACKEREL** *GOMA-SABA*
- **OCEAN PERCH** *AKOUDAI*
- **OCTOPUS FRESH/BOILED** *TAKO-ASHI*
- **OCTOPUS FRESH/BOILED** *IIDAKO*
- **ONAGA-SEABREAM** *ONAGADAI*
- **OUPER** *KUE*
- **PACIFIC COD** *MADARA*
- **PEN SHELL** *TAIRAGAI*
- **PIKE EEL** *HAMO*
- **POMFRET** *MANAGATUO*
- **ROCKFISH** *AKA-MEBARU*
- **ROCKFISH** *KUROSUI*
- **RUDDER FISH** *MEJINA*
- **SALMON** *FUJISAN SALMON*
- **SALMON ROE** *SUJIKO*
- **SANDFISH** *HATAHATA*
- **SARDINE** *IWASHI*
- **SAURY** *SANMA*
- **SCALLOP** *HOTATE*
- **SCULPIN** *HAKKAKU*
- **SEA BASS** *SUZUKI*
- **SEA BASS** *FUKKO*
- **SEA BASS** *HIRASUZUKI*
- **SEA BREAM ROE MILT**
- **SEA SNAIL** *HIRO-BAIGAI*
- **SEA SNAIL** *HOKKAITSUBU*
- **SEA SQUIRT** *TENNEN HOYA*
- **SEA URCHIN** *UNI*
- **SEABREAM** *MATO-DAI*
- **SEABREAM** *RENKODAI*
- **SHAD** *SHINKO*
- **SMELT** *AYU*
- **SMELT** *WAKASAGI*
- **SNOW CRAB** *ZUWAI-GANI*
- **SNOW CRAB** *SEIKO-GANI*
- **SPANISH MACKEREL** *SAWARA*
- **SQUID** *SHINIKA*
- **SQUID** *SURUME IKA*
- **SQUID** *HOTARUIKA*
- **STRIPED JACK** *SHIMA-AJI*
- **SWEET FISH**
- **THREELINE GRUNT** *ISAKI*
- **TILEFISH** *AMADAI*
- **TOP SHELL** *SAZAE*
- **TRIGGER FISH** *KAWAHAGI*
- **WILD MACKEREL** *SABA*
- **YELLOWTAIL** *BURI*

# SASHIMI & NIGIRI



## SASHIMI



### UNAGI

ITEM #	SPECS	BRAND	SIZE
82001	2/11#	MTZ Marine	9 oz.
82004	2/11#	MTZ Marine	12 oz.
82002	2/11#	MTZ Marine	10 oz.
82003	2/11#	MTZ Marine	11 oz.



### HAMACHI KAMA

ITEM #	ORIGIN	SPECS
86001	Japan	22#



### ANAGO IKEJIME

ITEM #	SPECS	SIZE
96105	51/55	10/4.4 LB



### HAMACHI LOIN

ITEM #	ORIGIN	SPECS
86015	Japan	22#



### ESCOLAR LOIN



### IZUMIDAI

ITEM #	ORIGIN	SPECS	SIZE
75003	Taiwan	22#	9/11 oz.
75001	Taiwan	22#	11 oz.



### ESCOLAR SAKU

ITEM #	ORIGIN	SPECS	BRAND	SIZE
81048	Korea		MTZ Marine	30 LB
81038	Korea	IVP	MTZ Marine	22 LB



### MADAKO

ITEM #	ORIGIN	SPECS	BRAND	SIZE
88003	Japan	22#/CS	Tetsujin	5 ct.
88001	Japan	22#		4 ct.



### HAMACHI FILLET

ITEM #	ORIGIN	SPECS	BRAND
86006	Japan	2-4kg	MTZ



### MADAKO LEG

ITEM #	SPECS
88010	10/2.2#



### SURUMEIKA



### SHIME SABA



### BANO IKA



### IKURA

## ROE



### TOBIKKO

ITEM #	ORIGIN	SPECS	BRAND
87015	Japan	12/1.1#/Cs	Wasabi DF
87010	Japan	12/1.1#/Cs	Black DF
87012	Japan	12/1.1#/Cs	Gold DF
87016	Japan	12/1.1#/Cs	Orange DF
87021	Japan	12/1.1#/Cs	Red DF
87013	China	12/1.1#/Cs	Gold Tetsujin
87002	China	12/1.1#/Cs	Black Tetsujin
87017	China	12/1.1#/Cs	Orange Tetsujin
87007	China	12/1.1#/Cs	Red Tetsujin



### MASSAGO

ITEM #	ORIGIN	SPECS	BRAND
76009	China	4.4#	MTZ
76010	Japan	1.1#	



## SHRIMP



### NOBASHI

ITEM #	ORIGIN	SPECS	BRAND	SIZE
80011	Vietnam	16/20	MTZ Marine	20PC X 30 Tray
80007	Vietnam	21/25	MTZ Marine	20PC X 30 Tray
80010	Vietnam	26/30	MTZ Marine	25PC X 30 Tray



### SUSHI EBBI

ITEM #	ORIGIN	SPECS	BRAND	SIZE
80032	Vietnam	20PC X 30 Tray	MTZ Marine	4L
80033	Vietnam	20PC X 30 Tray	MTZ Marine	5L
80031	Vietnam	20PCX 30 Tray	MTZ Marine	6L



### AMA EBI

ITEM #	SPECS	SIZE
80062	12X1KG	L
80063	12X1KG	XL



### SHRIMP ROCK P/D

ITEM #	SPECS	SIZE
80018	10/5#	70/90



### SHRIMP

ITEM #	SPECS	SIZE
80050	5/2#	21/25
80052	5/2#	31/40
80015	5x2#	91-110



### SHRIMP P/D TAIL ON

ITEM #	SPECS	SIZE
80096	5/2#	31/40



### SHRIMP TEMPURA

ITEM #	ORIGIN	SPECS	BRAND	SIZE
80019	Vietnam	10PC X 10TRAY /CS	MTZ Marine	13/15
80003	Vietnam	10PC X 10TRAY	MTZ Marine	16/20
80004	Vietnam	10PC X 10TRAY /CS	MTZ Marine	21/25



### SHRIMP P/D TAIL OFF

ITEM #	SPECS	SIZE
80093	5/2#	71/90



### SHRIMP BT HLSO

ITEM #	SPECS	SIZE
80023	6/4#	16/20
80024	6/4#	21/25
80025	6/4#	26/30



### SHRIMP WHITE HL-SO

ITEM #	SPECS	SIZE
80021	6/4#	21/25
80020	6/4#	16/20
80022	6/4#	26/30



## GINGER/WASABI



### SUSHI GINGER

ITEM #	ORIGIN	SPECS	SIZE
72004	China	Pink	20#/TUB
72005	China	White	20#/TUB



### WASABI POWDER

ITEM #	BRAND	SIZE
62001	Marine	10x2.2#

## RICE/NORI/MAME



### MAME SOY CREPE

ITEM #	ORIGIN	SPECS	BRAND	SIZE
MAME-P	USA	Pink	Takaokaya	6/20Sheet
MAME-G	USA	Green	Takaokaya	6/20Sheet
MAME-Y	USA	Yellow	Takaokaya	6/20Sheet
MAME-O	USA	Orange	Takaokaya	6/20Sheet
MAME-S	USA	Sesame	Takaokaya	6/20Sheet
MAME-W	USA	White	Takaokaya	6/20Sheet
MAME-N	USA	Natural	Takaokaya	6/20Sheet



### RICE PAPER

ITEM #	BRAND	SIZE
RICE-P	Tasty Joy	20 X 12OZ



### WAKAME CUT

ITEM #	BRAND	SIZE
96029	MTZ Marine	8/1LB
93252	Tetsujin	12/1#



### RICE

ITEM #	ORIGIN	SPECS	BRAND	SIZE
RICE-M	USA	Med Grain	Musubi	40#
RICE-K	USA	Short Grain "Koshihikari"	Musubi	40#
RICE-B	USA	Brown	Musubi	40#



### NORI CAN

ITEM #	SPECS	SIZE
92007	Half Sheet	20PC/CS
92006	Whole Sheet	20PC/CS



### RICE NET

ITEM #	ORIGIN	SIZE
RICE-N	Japan	1M



### NORI

ITEM #	ORIGIN	SPECS	BRAND	SIZE
92001	Korea	Gold-Half Sheet	Marine	100SHT/10Pk/Bx
92002	Korea	Gold-Whole Sheet	Marine	100SHT/10Pk/Bx
92003	Korea	Silver-Half Sheet	Marine	50SHT/10Pk/Bx
92004	Korea	Silver-Whole Sheet	Marine	50SHT/10Pk/Bx



### DRIED DASHI KONBU

ITEM #	ORIGIN	BRAND	SIZE
93292	China	Tetsujin	5/5#



## BATTER MIX



### TEMPURA BATTER MIX

ITEM #	ORIGIN	SPECS	BRAND	SIZE
71001	USA	Box	Tetsujin	30#
71008		Gold		30#
71007	Canada	White Bag	Welna	40#
71006	Canada	Brown Bag	Welna	40#



### PANKO JAPANESE STYLE

ITEM #	ORIGIN	BRAND	SIZE
93445	USA	Tetsujin	20#/BAG

## MISO/TOFU



### MISO PASTE

ITEM #	ORIGIN	SPECS	BRAND	SIZE
60002		Shiro	Tetsujin	44#
60001	China	Shiro	Maurichi	44#



### TOFU

ORIGIN	SPECS	BRAND	SIZE
USA	Firm-Red	House Foods	19 OZ
USA	Med-Blue	House Foods	19 OZ
USA	Soft-Green	House Foods	19 OZ



ITEM #	ORIGIN	SPECS	SIZE
1102	Japan	Med-Firm	120/100

## SAUCES



### SAMBA CHILI OIL

ITEM #	ORIGIN	SIZE
73036	Japan	6/3.64 OZ



### TONKATSU SAUCE

ITEM #	ORIGIN	BRAND	SIZE
73016	Japan	Bulldog	6/60.9FL OZ



### UNAGI SUSHI SAUCE

ITEM #	ORIGIN	BRAND	SIZE
73017	USA	Tetsujin	6/64FL OZ



### OYSTER SAUCE

ITEM #	BRAND	SIZE
73011	Panda	6/5#



### UNAGI COATING SAUCE

ITEM #	ORIGIN	BRAND	SIZE
73023	USA	Bansankan	6/5.2LB



### SWEET CHILI SAUCE

ITEM #	ORIGIN	BRAND	SIZE
73024	Thailand	Mae Ploy	12X32OZ



## SAUCES



### PONZU SAUCE

ITEM #	ORIGIN	BRAND	SIZE
73012	USA	Otafuku	6/63.90oz



### JAPANESE DRESSING

ITEM #	ORIGIN	BRAND	SIZE
73021	Japan	Nippon Shoken	60fl oz/6



### RAYU HOT SESAME OIL

ITEM #	ORIGIN	BRAND	SIZE
73022	Japan	Kuki	6/1650G(3.63LB)



### SESAME OIL

ITEM #	ORIGIN	BRAND	SIZE
73003	Japan	Kadoya	10x3.5#



### SRIRACHA HOT CHILI SAUCE

ITEM #	ORIGIN	BRAND	SIZE
73014	USA	Huy Fong	12X28OZ



### POKE SAUCE

ITEM #	SIZE
73025	6/4.8#



### SOY SAUCE

ITEM #	ORIGIN	SPECS	BRAND	SIZE
73028	USA	Low Sodium	Kikkoman	5GL
73030	USA	Low Sodium	Kikkoman	200PC/ 0.20Z/CS
73027	USA	Regular	Kikkoman	5GL
73035	USA	Regular	Kikkoman	500PC/CS



### YUZU CITRUS DRESSING

ITEM #	ORIGIN	BRAND	SIZE
73040	USA	Mizkan	6/32OZ



### KISHIDA YUZU-SU (NO SALT)

ITEM #	ORIGIN	SPECS	BRAND
70068	Japan	Citrus Juice	Kishida

## DRY



### BONITO - HANA KATSUO

ITEM #	ORIGIN	BRAND	SIZE
93029	Japan	Tetsujin	6/1#



### SHISHIMI (NANAMI)

ITEM #	ORIGIN	BRAND	SIZE
93058	Japan	Moor Spice	30/300GM



### MAYONNAISE

ITEM #	ORIGIN	BRAND	SIZE
37006	Japan	Kewpie	20/500g



### DRIED MUSHROOM (SHITAKI)

ITEM #	BRAND	SIZE
DRY-M	Tetsujin	6/5#



## DRY



### BARAN EBI GATA

ITEM #	ORIGIN	BRAND	SIZE
93027	Japan	Tetsujin	45/1000PC



### BAMBOO CHOPSTICK

ITEM #	ORIGIN	SPECS	BRAND	SIZE
CHOPS-01	China	9 In.	Marine	2000/PAIRS

Custom logo chopsticks available for Preorder



### BARAN YAMAGATA "S"

ITEM #	ORIGIN	BRAND	SIZE
93207	Taiwan	Tetsujin	60/1000



### DISPOSABLE GLOVES

ITEM #	ORIGIN	SPECS	BRAND	SIZE
GLV-J-M	Japan	40/100PC/CS	Asahi	Medium



### MIOLA

ITEM #	ORIGIN	BRAND	SIZE
65011	Japan	Ohtsuka	10/2.2#



### GREEN TEA SENCHA

ITEM #	ORIGIN	SIZE
TEA-S	Japan	2.2#x4/4



### HONDASHI

ITEM #	ORIGIN	BRAND	SIZE
HON-12	Japan	Ajinomoto	12/2.2#



### MUSTARD POWDER

ITEM #
70002



### FURIKAKE

ITEM #	ORIGIN	BRAND	SIZE
33006	Japan	Mishima	36pk/Cs

Inquire for available flavors.



### SUGAR

ITEM #	SIZE
70001	50LB



### SESAME SEED

ITEM #	ORIGIN	SPECS	BRAND	SIZE
66001	USA	Roasted White	Hong Chang	8/3#
66002	USA	Roasted Black	Hong Chang	8/3#
66005	China	Roasted Black	Tetsujin	12/2.2#
66003	China	Roasted White	Tetsujin	12/2.2#
		Roasted White		50#



### FRIED ONION

ITEM #	BRAND	SIZE
96120	Tasty Joy	10CAN X 454G

# SUSHI BAR ESSENTIALS



## VINEGAR/OIL



### MIRIN HONTERI

ITEM #	ORIGIN	BRAND	SIZE
VIN-MIRI	USA	Mitsukan	5.28gal



### VINEGAR RICE FUJI

ITEM #	ORIGIN	BRAND	SIZE
VIN-FUJI	USA	Mitsukan	5.28gal



### SUEHIRO RICE GRAIN VINEGAR

ITEM #	ORIGIN	BRAND	SIZE
VIN-SUEH	USA	Mitsukan	5.28gal
69010	USA	Kikkoman	5 gal



### KD-39 SUSHI SEASONING

ITEM #	ORIGIN	BRAND	SIZE
VIN-K039	USA	Mitsukan	5.28gal



### SHIRAGIKU VINEGAR

ITEM #	ORIGIN	BRAND	SIZE
VIN-SHIR	USA	Mitsukan	5.28gal



### SD-51 SUSHI SEASONING

ITEM #	ORIGIN	BRAND	SIZE
VIN-SD51	USA	Mitsukan	5.28gal



### MD-43 SUSHI SEASONING

ITEM #	ORIGIN	BRAND	SIZE
VIN-SD43	USA	Mitsukan	5.28gal



### VEGETABLE OIL

ITEM #	ORIGIN	BRAND	SIZE
OIL-VEG	USA	Mike Brand	35#/Bx



### SOY CREAM LIQUID SHORT

ITEM #	ORIGIN	BRAND	SIZE
OIL-LS	USA	Sunrise	35#/Bx



### CANOLA SALAD OIL

ITEM #	ORIGIN	BRAND	SIZE
OIL-CANO	USA	Nature's Secret	35#/Bx



### CORN OIL

ITEM #	ORIGIN	BRAND	SIZE
OIL-CORN	USA	Butcher Boy	35#/Bx



### SOY CLEAR LIQUID SHORT

ITEM #	ORIGIN	BRAND	SIZE
OIL-LS	USA	Butcher Boy	35#/Bx



### OLIVE OIL X-VIRGIN

ITEM #	ORIGIN	SIZE
OIL-OLIV	USA	4/3Liter

## SODA



### RAMUNE SODA

ITEM #	ORIGIN	SPECS	BRAND	SIZE
38001	Japan	Blueberry	Yappari	30/6.6FL OZ
38004	Japan	Regular	Yappari	30/6.6FL OZ
38002	Japan	Melon	Yappari	30/6.6FL OZ

ITEM #	ORIGIN	SPECS	BRAND	SIZE
38005	Japan	Strawberry	Yappari	30/6.6FL OZ
38003	Japan	Orange	Yappari	30/6.6FL OZ



## EDAMAME KERNEL

ITEM #	ORIGIN	BRAND	SIZE
67003	China	MTZ	14oz x 20 pk.



## CHUKA IDAKO

ITEM #	ORIGIN	BRAND	SIZE
78004	Japan	DF	4X4.4#



## EDAMAME POD

ITEM #	ORIGIN	BRAND	SIZE
67004	China	MTZ	



## CHUKA IKA SANSAI

ITEM #	ORIGIN	BRAND	SIZE
78006	China	MTZ Marine	4X4.4#



## HIYASHI WAKAME

ITEM #	ORIGIN	BRAND	SIZE
78001	Japan	DF	4X4.4#
78002		Tetsujin	4X4.4#
78003	China	MTZ Marine	4X4.4#



## CRAWFISH SALAD

ITEM #	ORIGIN	BRAND	SIZE
93281	Japan	Iyoya	18X1.43 Lb.



## GYOZA GREEN VEGETABLE

ITEM #	ORIGIN	BRAND	SIZE
89009	USA	Passport Cuisine	16tray / 20 pc.



## VEGETABLE SPRING ROLLS

ITEM #	ORIGIN	BRAND	SIZE
93820	China	Greenland	10/20 pc. / 1.5 oz.



## GYOZA SHRIMP

ITEM #	ORIGIN	BRAND	SIZE
89003	USA	Passport Cuisine	4/1.65 Lb.



## KAMABOKO RED

ITEM #	ORIGIN	SIZE
36005	USA	24/6.0 oz.



# IDEAL APPETIZERS



## POTSTICKER PRECOOKED CHICKEN

ITEM #	ORIGIN	BRAND	SIZE
89007	USA	O' Tasty	32 oz. x 8 bags



## SCALLOP

ITEM #	ORIGIN	SPECS	BRAND	SIZE
79012	USA	42296	Millennium	6x5
79013	USA	U/10 (IQF)	Millennium	6X5



## POTSTICKER PRECOOKED PORK

ITEM #	ORIGIN	BRAND	SIZE
89008	USA	O' Tasty	32 oz. x 8 bags



## TAMAGO

ITEM #	ORIGIN	BRAND	SIZE
75015	Japan	Tetsujin	20/500 g.
75014	Japan	Ajitkan	24 x 1.1#



## SHRIMP SHUMAI

ITEM #	ORIGIN	BRAND	SIZE
80077	USA	Passport Cuisine	16 tray / 15 pc.



## CRAB MEAT CAN

ITEM #	ORIGIN	SPECS	SIZE
BC-20101	Indonesia	LUMP	12/1 Lb.

Inquire for available sizes.

## NOODLES



## UDON

ITEM #	ORIGIN	SPECS	BRAND
68004	Korea	8X5X240G	A+
68002		6/5/250G	Tetsujin



## YAKISOBA MARUCHAN

ITEM #	ORIGIN	SIZE
68001	Japan	2/10/16.930Z



# SHELLFISH/OYSTERS/CLAMS

## SHELLFISH



### GREEN MUSSELS

ITEM #	ORIGIN	SPECS
93128	New Zeland	12/2LB



### HOTATE

ITEM #	ORIGIN	SPECS	SIZE
79018	Japan	10/2.2#	S
79006	Japan	10/2.2#	2S
79007	Japan	10/2.2#	3S



### HOKKIGAI

ITEM #	ORIGIN	SPECS	BRAND	SIZE
HOKKI-L10	Canada	10x1kg	Clearwater	L



### SCALLOP

ITEM #	SPECS	BRAND	SIZE
79002	6X5#	Millenium	40/60
79001	6X5#	Millenium	60/80

## CRAB/LOBSTER



### CRAWFISH TAIL MEAT

ITEM #	ORIGIN	SPECS	BRAND	SIZE
93283	Japan	24/1LB	Tetsujin	150-200



### LOBSTER CKL MEAT

ITEM #	ORIGIN	SPECS
85005	Canada	6X2#



### KANIKAMA SHREDDED

ITEM #	ORIGIN	SPECS	BRAND
98003	USA	12/2.5#	Louis Kemp
98006	Japan	10/2.2#	Osaki
98002		12/2.5#	Tetsujin
98008	India	12/2.5lb (Premium)	MTZ Marine
98010	India	12/2.5lb (Standard)	MTZ Marine
98013			



### LOBSTER TAIL

SIZE
6 oz.
5 oz.
16/20 oz.
14/16 oz.
20/24



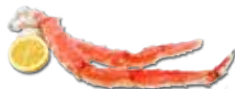
### Kanikama Stick

ITEM #	ORIGIN	SPECS	BRAND
98001	Japan	2/20/1.1#	Osaki
98012		20/500GM	Tetsujin
96013	India	0.5Kg/20pk/CS (No MSG & Gluten Free)	MTZ Marine
98007	India	0.5Kg/20pk/CS (Premium)	MTZ Marine
98009	India	0.5Kg/20pk/CS (Standard)	MTZ Marine



### Snow Crab Meat

ITEM #	ORIGIN	SPECS	BRAND
98017	Korea	6/5#	MTZ Marine



### KING CRAB

ITEM #	SPECS	SIZE
85023	20#	6-9
85024	20# (RED)	9-12



### Soft Shell Crab

ITEM #	SPECS	SIZE
83002	12PC/6PK/CS	Jumbo
83003	14PC/6PK/CS	Prime
83001	9PC/6PK/CS	Whale
83004	18PC/6PK/CS	Hotel

# JAPANESE CUISINE VEGETABLES



## AJITSUKE KANPYO

ITEM # SIZE  
93091 10/2.2lb



## INARI

ITEM # ORIGIN BRAND SIZE  
93074 Japan MTZ 2/8/2.38lb



## AJITUKE INARI

ITEM # ORIGIN SIZE  
93074 Japan 2/8/2.38



## AO-SASA

ITEM # BRAND SIZE  
96028 MTZ Marine 30/100pc



## YAMAGOBO

ITEM # SIZE  
96027 10/1kg



## TAKUAN

ITEM # SIZE  
96026 10/1kg



## OHBA

ITEM # SIZE  
OHBA-01



## KAIWARE

ITEM # SIZE  
KAISPR-12 12pk/cs



## UDAMA

ITEM # SIZE  
UDAM-01 18pc/pk



## ORCHID

ITEM # SIZE  
FLOWER 50ct/cs



## KABOCHA

ITEM # SIZE  
KABO-40 40lb



## FRESH WASABI

ITEM # ORIGIN SIZE  
36018 Japan 1lb



## SHIMEJI

ITEM #  
36010



## ENOKI

ITEM #  
MUSHE-01



## AJITSUKE SHITAKE

ITEM # SIZE  
SHIC-01 10/2.2lb



## DAIKON RADISH

ITEM # SIZE  
KRAD 50lb



## MYOGA

ITEM #  
MYOG-01



## YUZU

ITEM # ORIGIN  
Japan



## NASU

ITEM # ORIGIN  
EGGP-56001 Japan



## KIMCHE/WHOLE POG

ITEM # SIZE  
70003 4/1gal



## HOT PEPPER PASTE (GOCHUYANG)

ITEM # SIZE  
Gochuyang 17kg



## SWEET POTATO- JAP

ITEM # SIZE  
POTSWT-40 50lb



*We carry a wide variety of fresh vegetables and fruits.*



**AVOCADO**

**CUCUMBER**

**CUCUMBER SEEDLESS**

**BROCCOLI**

**LEMONS**

**LIMES**

**LETTUCE**

**ROMAINE**

**MUSHROOM**

**GREEN ONION**

**ONION**

**JALAPEÑO**

**PEPPERS**

**POTATO**

**RADISH**

**SPRING MIX**

**TOMATOES**

**ZUCCHINI**

**PROUD SUPPLIERS OF ALEJANDRINA MEXICAN AVOCADOS**

**WE CARRY ALL SIZES TO MEET YOUR NEEDS: 36 • 40 • 48 • 60**



# CONTAINERS



ITEM #	BRAND	DESCRIPTION	SIZE	SPECS	ORIGIN
Cont-Yp1.0	Tetsujin	Sushi Containers Tray & Lid	500 / Set	1.0	Taiwan
Cont-Yp1.5	Tetsujin	Sushi Containers Tray & Lid	500 / Set	1.5	Taiwan
Cont-Yp2.0	Tetsujin	Sushi Containers	400 / Set	2	Taiwan
Cont-Yp0.8	Tetsujin	Sushi Container	500 / Set	0.8	Taiwan
FH-10	FH	Sushi Tray Fh-10 Top &Bottom	1200 / Set		China
FH-15	FH	Sushi Tray Fh-15 Top & Bottom	100 / Set		China
FH-510	FH	Sushi Tray Fh-510	500 / Set		China
FH-08	FH	Sushi Tray Fh--08 1500 Top & Bottom	1500 / Set		China
FH-520	FH	Sushi Tray 520 400 / Set	400 / Set		China
FH-507	FH	Sushi Tray 507 550 / Set	550 / Set		China
FH-128	FH	Sushi Tray Fh-128 150 / Set	150 / Set		China
FH-515	FH	Sushi Tray Fh-515	450 / Set		China
MH-30	Tetsujin	Sushi Tray Mh-30 Light Blue	300 / Set		Taiwan
MH-40	Tetsujin	Sushi Tray Mh-40 Light Blue	300 / Set		Taiwan
TZ-010	TZ	Sushi Tray Tz-010 Black	1200 / Set		
TZ-015	TZ	Sushi Tray Tz-015 Black	1200 / Set		
TZ-020	TZ	Sushi Tray Tz-020 Black	800 / Set		
TZ-001	TZ	Sushi Tray 1400pcs (1roll)	1400 / Set		
ST-3-008BT	STI	Blue Sushi Tray Base 50pcx30	1500 / Set		









**MARTINEZ**



**PRODUCE & SEAFOOD**

[mpseafood.com](http://mpseafood.com)

340 N. SACRAMENTO BLVD.  
CHICAGO, IL 60612

**773-826-2840**

FAX: 773-826-2839

• • • •

**BOSTON FISH PIER, BAY 25-27**  
212 NORTHERN AVE.  
BOSTON, MA 02210

**857-350-3483**

FAX: 857-233-4753